

MORE
THAN **4,400**
MEMBERS &
GROWING!

Your Feedback is Essential
to Improving Our Programs

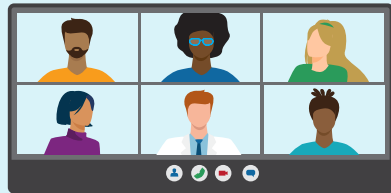
We are grateful to our Community Insights Network, established in 2017 and made up mostly of ABIM Board Certified physicians who share feedback and insights that are invaluable to enhancing our programs for all physicians.



Gathering Important Insights in 2024

25 Physician Advisory Panelists

Improving the LKA, ABIM public website and Physician Portal



50 One-On-One Interviews

Recording experiences with the blueprint, LKA and ideas on physician recognition



35 Research Participants

Testing usability, design and clarity of surveys, campaigns and exam items.



More than 5,500 Community Engagement Emails

Including CIN-related invitations and inbox responses



30 Focus Groups

Exploring the early career physician experience, the MOC program and physician recognition



760 Survey Respondents

General program sentiments



Highlighting Some of Our Members



Ryan Maves, MD
FCCM, FCCP, FIDSA
ABIM Blog, November 2024



Shawnta Pittman-Hobbs, MD,
FAAHPM
ABIM Blog, May 2024



Preeti Chhabria, MD
ABIM Blog, March 2024